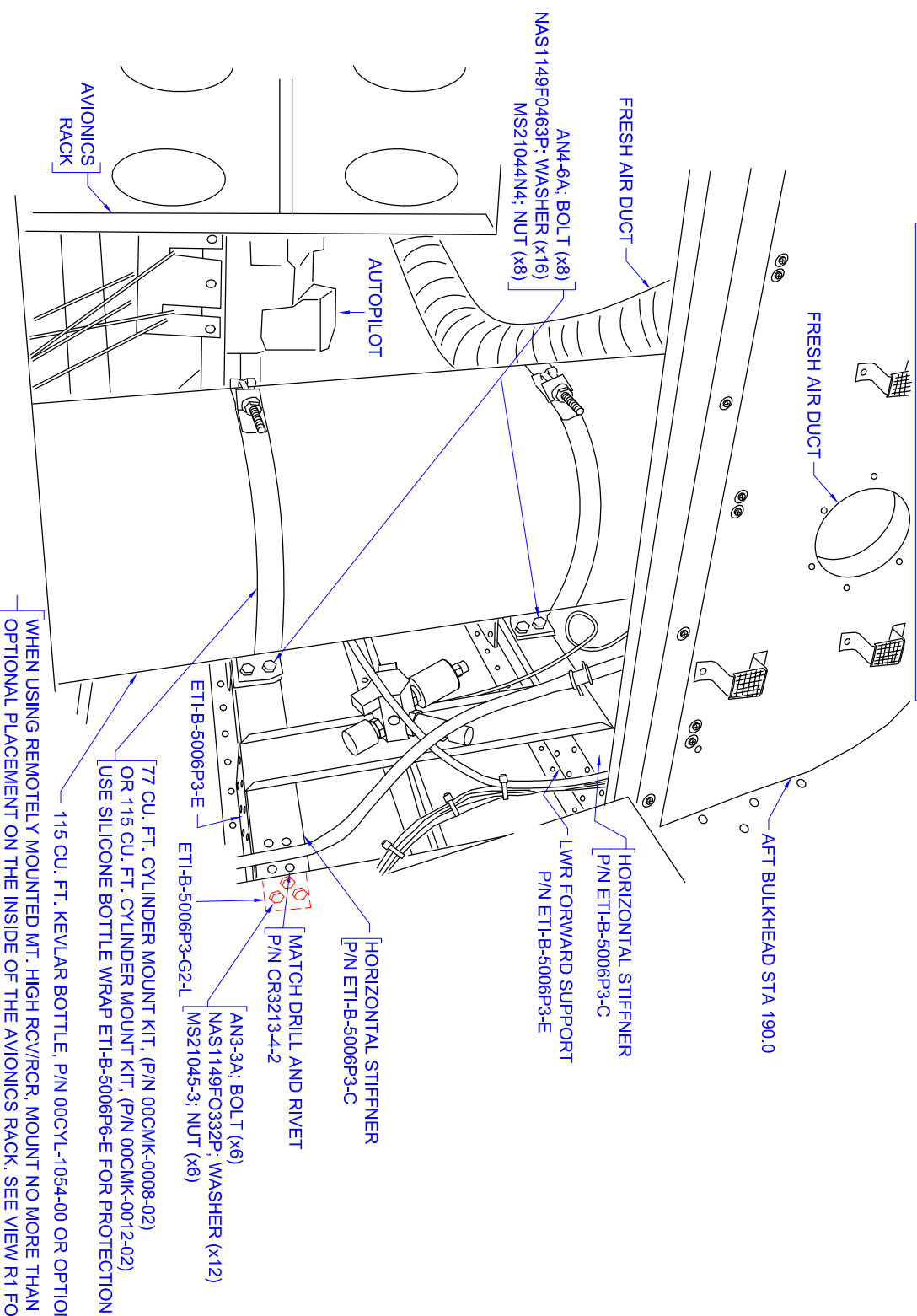


*PARTS THAT ARE OPTIONAL REQUIRING THE ROOM AND WEIGHT ON THE INSTALLATION PROCESS:

00CYL-1052-00	77 CU/FT KEVLAR WRAPPED BOTTLE	1
00CMK-0008-02	77 BOTTLE CYLINDER MOUNT KIT	1
00BLT-1046-00	12V RCV/RGR (NO DIP TUBE)	1
00BLT-1074-00	2.25" 12V GAGE (WITH SENDING UNIT)	1

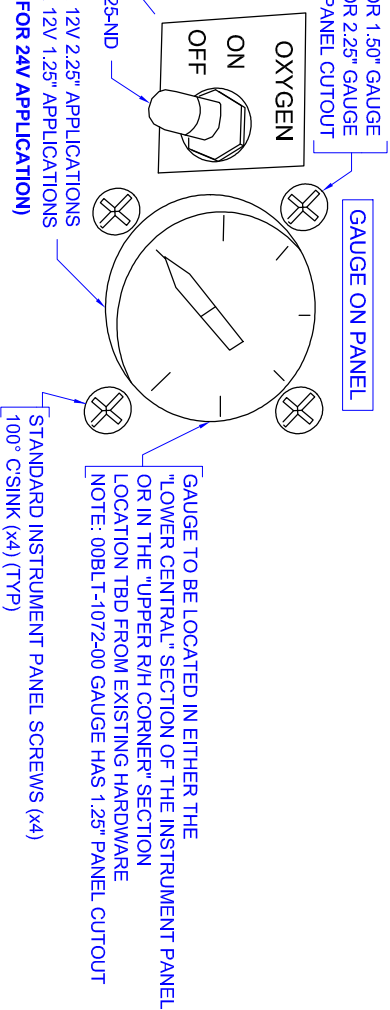
VIEW LOOKING AFT AT INSTALLED BOTTLE



USE TEMPLATE ETI-B-5006P-150 TO CUT HOLES FOR 1.50" GAUGE
USE TEMPLATE ETI-B-5006P-225 TO CUT HOLES FOR 2.25" GAUGE
NOTE: 1.50" GAUGE HAS A 1.25" PANEL CUTOUT

NOTE: DB-9 CONNECTION TO GAGE
P/N: ETI-B-5006P6-B

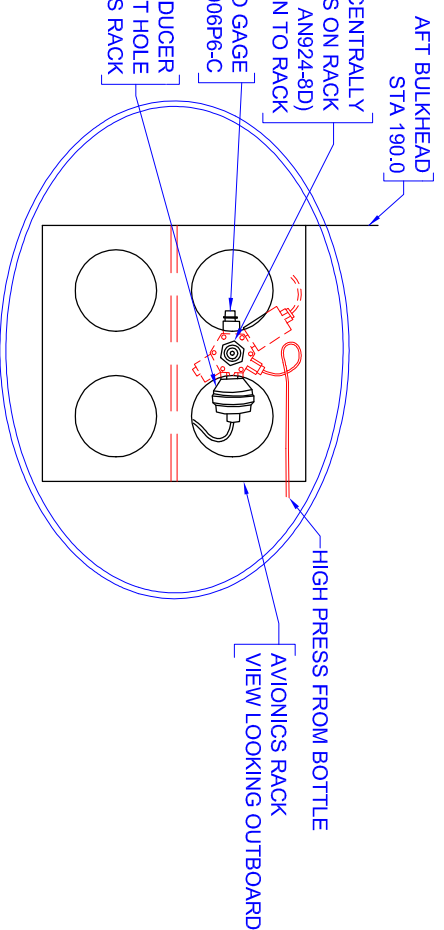
ETI-B-5006P-11 LABEL
SWITCH, DIGIKEY CKN1125-ND
P/N 00BLT-1074-00 GAGE FOR 12V 2.25" APPLICATIONS
P/N 00BLT-1072-00 FOR 12V 1.25" APPLICATIONS
(12V GAGES WILL WORK FOR 24V APPLICATION)



Ø3/4(DIA) DRILL, LOCATED CENTRALLY BETWEEN UPPER TWO HOLES ON RACK AS SHOWN. USE SUPPLIED NUT (P/N AN924-8D) TO FASTEN TO RACK
HARNES TO GAGE
P/N ETI-B-5006P6-C

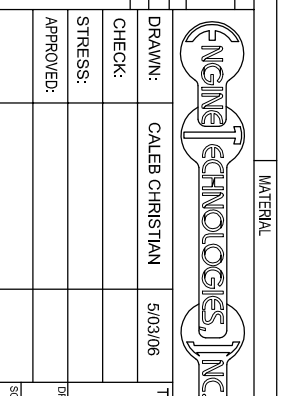
ROTATE SO THAT TRANSDUCER CAN PROTRUDE OUT HOLE IN AVIONICS RACK

**VIEW R1
OPTIONAL PLACEMENT
FOR RCV/RGR ON AVIONICS RACK**



WHEN USING REMOTELY MOUNTED MT. HIGH RCV/RGR, MOUNT NO MORE THAN 2 FT. FROM THE BOTTLE.
OPTIONAL PLACEMENT ON THE INSIDE OF THE AVIONICS RACK. SEE VIEW R1 FOR DETAILS.

QTY.	PART NUMBER	MATERIAL	SPECIFICATION	DESCRIPTION
UNLESS OTHERWISE SPECIFIED				
DIMENSIONS ARE IN INCHES				
TOLERANCES ARE				
DECIMALS	ANGLES			
±0.005	MACH	FORMED		
±0.002/0.010	±0°30'	±1°		
FRACTIONS: 1/16				
DRAWN: CALEB CHRISTIAN		TITLE: L/H OXYGEN SYSTEM		
CHECK:		DRAWING NO: ETI-B-5006-1-L		
STRESS:		SCALE: NTS		
APPROVED:		SHEET: 3 OF 5		



400 AIRPORT ROAD
ADA, OKLAHOMA 74820